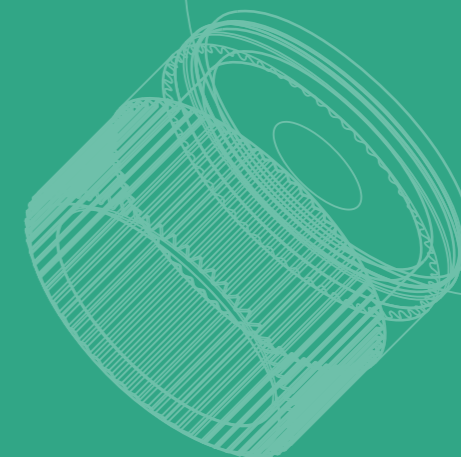




3D PRINTING PRODUCTS INTRODUCTION

eResins



Official Website



Tel : +86 755 86581960

Facebook



E-mail : bright@esun3d.com

X



Instagram



Website : www.esun3d.com

LinkedIn



www.esun3d.com

2025

Profiles

eSUN is an internationally renowned 3D printing material brand founded by Shenzhen Esun Industrial Co., Ltd. The company was established in 2002 and was successfully listed on the NEEQ since 2016 (stock code: 836514).

The eSUN brand is committed to research and development, production and sales, and promotes the in-depth development of the 3D printing industry. The company has mastered the production technology of PLA, PCL, ABS, PETG and other 3D printing materials, which can meet different requirements of customers. eSUN 3D printing materials have a full range, excellent performance and wide application. They are widely used in product design, industrial manufacturing, surgical medical treatment, culture and art, education and scientific research, etc.



- ① Shenzhen, CN Headquarters
- ② Wuhan, CN Office
- ③ Xiaogan, CN Factory
- ④ Ho Chi Minh, VN Factory
- ⑤ Russian transit warehouse
- ⑥ German transit warehouse
- ⑦ Dutch transit warehouse
- ⑧ Spanish transit warehouse
- ⑨ Houston, US Office
- ⑩ US transit warehouse

eSUN's products have been recognized by customers all over the world, and sold to nearly 100 countries and regions, building a global reputation .

Resin/Product Catalog

Standard Resin Series

- 01 | W200 Water-Washable Resin
- 02 | W300 16K Water-Washable Resin
- 03 | eResin-PLA Pro
- 04 | S200 Standard Resin
- 05 | S300 Standard Resin
- 06 | A200 eResin-ABS Pro
- 07 | MA100 Matte Resin
- 08 | HS100 High Speed Resin

Functional Resin Series

- 09 | Hard-Tough Resin
- 10 | PM200 PMMA Like Resin
- 11 | PA100 Nylon-Like Resin
- 12 | HT100 High Temp Resin
- 13 | Jewelry Casting Resin
- 14 | eResin-Flex
- 15 | Elastomer



W200 Water-Washable Resin

W200 is specially designed for ultra-low-odor water-washed photosensitive resin for studios or educational places with limited ventilation conditions, which is widely used in education and training, family personal DIY and other fields. Its highly innovative formula design provides high fluidity for the resin, which can quickly remove the residual resin on the surface of the model without secondary treatment (the cleaning efficiency is improved by 50%).



- Low Smell
- High Liquidity
- Excellent Heat resistance



Personal DIY



Education



Model Figures



W300 16K Water-Washable Resin

W300 is a photopolymer resin developed for the 16K photopolymerization 3D printing platform, specifically tailored for miniature models and high-resolution prototype applications. With 20 μ m precision feature reproduction capability, it achieves exact replication of complex geometries and artistic details. Its water-washable property eliminates the need for solvent-based post-processing, ensuring operator safety and environmental sustainability.



- 16K High-Precision
- Low Shrinkage
- Excellent Heat resistance



Miniature models



Dental models



Prototype design



eResin-PLA Pro

Base material comes from plant extract PLA. Excellent balance of strength and toughness. High Precision, highly detailed printed object. High compatibility, suitable for color and mono screen, large and small size printers.



- Good applicability
- Strong - tough balance
- Biocompatibility



Model figures



Dental models



Mass production





S200 Standard Resin

Economical general-purpose resin, providing 10 Pantone certified color systems, low shrinkage rate (<0.3%) to ensure that complex models are not deformed. It has passed RoHS certification and has no irritating smell. It is suitable for closed environments such as classrooms and families.



- Safe with low odor
- High strength and low shrinkage
- Excellent chemical and heat resistance



Model figures



Dental models



Mass production



S300 Standard Resin

S300 is a general-purpose photosensitive resin suitable for 385-405nm wavelength LCD/DLP 3D printing equipment. It has both high rigidity and easy molding characteristics. It can easily achieve complex structural molding, low operation threshold and strong compatibility of printing equipment. It is suitable for beginner users to get started quickly.



- High rigidity
- Wide compatibility
- High cost - performance ratio



Beginner Practice



Design Proofing





A200 eResin-ABS Pro

This is an upgraded ABS-like high-strength engineering resin with the physical properties of ABS material. Its high strength, impact resistance and low shrinkage make it ideal for printing protective plastic housings.



- High strength
- Impact - resistant
- Drillable



Game figurine



Assembly design



Drop - resistant scenarios



MA100 Matte Resin

High-precision matte resin is specially designed for applications that require extreme details. It can accurately reproduce the texture depth of 0.03-0.1mm on the surface of the model to ensure the perfect display of microstructures. At the same time, its unique matte texture can avoid reflective interference when the model is colored and painted.



- High molding accuracy
- Matte texture
- Low viscosity



Model figures



Prototype design





HS100 High Speed Resin

The material specially developed for high-speed printers can still achieve smooth surfaces for high-speed printing under a layer thickness of 5-20 microns. Compared with traditional resin, the printing efficiency is improved by 3 times with the same accuracy (the actual measurement of printing is 10 microns and the thickness is 1000 layers/h), which supports 24-hour continuous production and helps shorten the user's product development cycle.



- 3x Print speed
- Good surface smoothness
- High precision and detail restoration



Ornament
Display



Mass
Production



Hard-Tough Resin

Hard-Tough resin combines strength and impact resistance, ideal for mechanical components and protective shells requiring robust performance. Compatible with mainstream LCD/DLP printers, it enables mold-free rapid manufacturing of complex precision parts.



- High toughness
- High impact resistance
- Sturdy and durable



Mechanical
Structure



Industrial
Design





PM200 PMMA Like Resin

eSUN PMMA Like Resin has excellent post-processing transparency after grinding and polishing, and spraying with UV high-transmitting oil. With high toughness and specific impact resistance, transparent resin 3d printing is more suitable for shape and assembly verification. Moreover, the PMMA Like Resin has excellent internal transparency and can be used to verify beautiful transparent concept models.



- High transparency
- Anti - yellowing
- High toughness



Lighting



Optics



Transparent parts



PA100 Nylon-Like Resin

This resin can be used to print functional parts. It has higher impact resistance than ordinary resin. Excellent mechanical performance, the printed product is strong and durable, and can be mechanically drilled. Suitable for resin printers of various sizes and types.



- Good toughness and impact - resistance
- Can be folded 180 degrees
- No breakage, and no powdering during high - speed operation

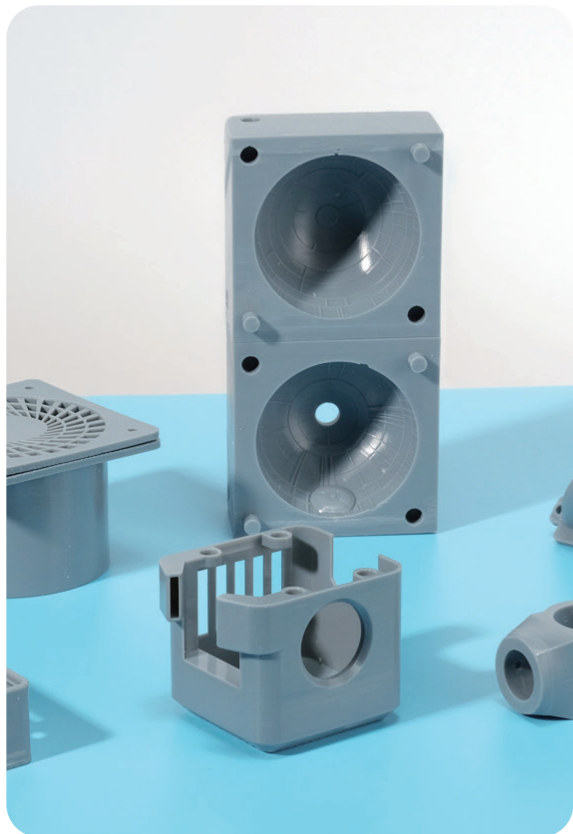


Joint buckle



Industrial parts





HT100 High Temp Resin

This high-temperature resistant resin achieves a groundbreaking heat deflection temperature (HDT) above 280 ° C. It maintains structural stability with zero warping after extreme 220 ° C oil immersion for 30 minutes, proving reliable performance in sustained high-heat environments.



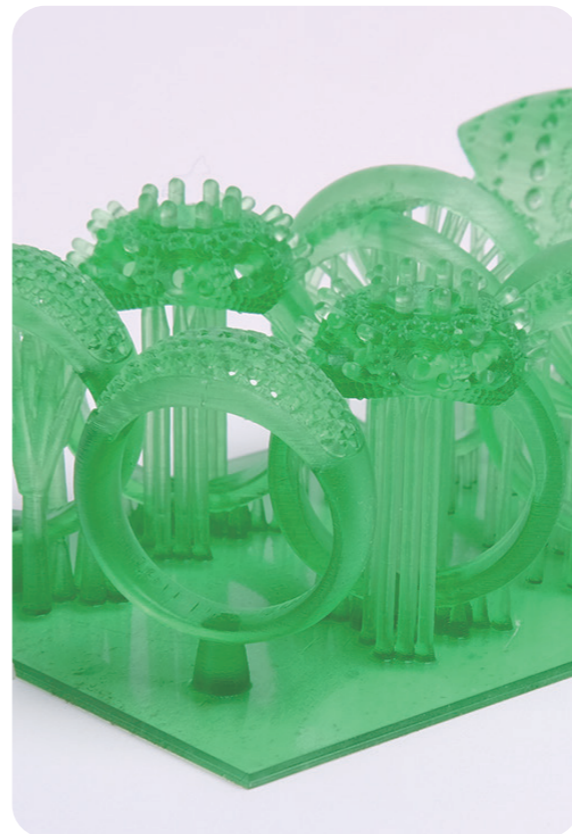
- Heat resistance
- High precision
- High hardness



Mold Making



Industrial Parts



JC100 Jewelry Cast Resin

JC100 resin, developed for jewelry casting, offers minimal ash and residue, excellent casting properties, and high - precision output. It can produce high - quality jewelry with fine and complex details clearly visible. It's ideal for lost - wax casting of gold, silver, and copper ornaments.



- High precision
- Low ash content
- Low residue



Jewelry





eResin-Flex

High elongation at break, good elasticity, tear resistance, tensile, bending and compression, quick rebound, a certain wear resistance. Compared with eResin-Flex, the viscosity of elastic resin is greatly reduced to ensure release and molding.



- Good elasticity, tear - resistant
- Bend - resistant, high toughness
- Low hardness, low viscosity



Industrial Parts



Flexible Manufacturing



Elastomer

The elastic resin is a single-component elastomer developed based on the mechanism of both photo-curing and thermal-curing. It has a high elongation at break and high tear resistance. Models designed with a lattice structure and printed with this resin can ensure sufficient resilience, and it is compatible with mainstream LCD/DLP printers.



- High elasticity
- High elongation at break
- Strong tear resistance



Shock and collision prevention



Seat cushions and backrest cushions



Shoe materials